



ARC1000

SPECIFICATIONS

ACOUSTIC & ELECTRICAL SPECIFICATIONS:

- Nominal Impedance: 8 ohm
- Max Amp Power: 175W
- Frequency Range: 36 Hz – 23 kHz (–6 dB)
- Sensitivity: 90 dB SPL, 1 Watt @ 1Meter
- Crossover Frequency: 930 Hz – 5.6 kHz

SYSTEM COMPONENTS:

- Cabinet: ARC1000 (Not For Sale)
- Grille: ARC1000 (B6940194)
- Low Frequency Transducer: 10 in. (254mm) Polymer Laminate (C250R01J1970)
DC Resistance: 5.3 ohm ±10% Copper Wire
- Mid Range Transducer: 5 in. (127mm) Polymer Laminate (C130R07J1970)
DC Resistance: 7.4 ohm ±10% Copper Wire
- High Frequency Transducer: 1 in. (25mm) Ti Laminate Dome Transducer (AW025M3D08TTP0010)
DC Resistance: 5.8 ohm ±10% Copper Wire

SYSTEM COMPONENTS: (cont'd)

- Crossover Network B6034164

AURAL SWEEP TEST SPECIFICATIONS:

- A. System Aural Sweep Test: 5.0V Input, 20 Hz to 20 kHz
- B. L.F. Aural Sweep Test: 5.0V Input, 50 Hz to 5 kHz
- C. M.F. Aural Sweep Test: 4.0V Input, 700 Hz to 5 kHz
- D. H.F. Aural Sweep Test: 2.0V Input, 1 kHz to 20 kHz

PHYSICAL SPECIFICATIONS:

- Enclosure Dimensions: 39.0 x 12.0 x 11.0 in. D (991mm x 305mm x 279mm D)

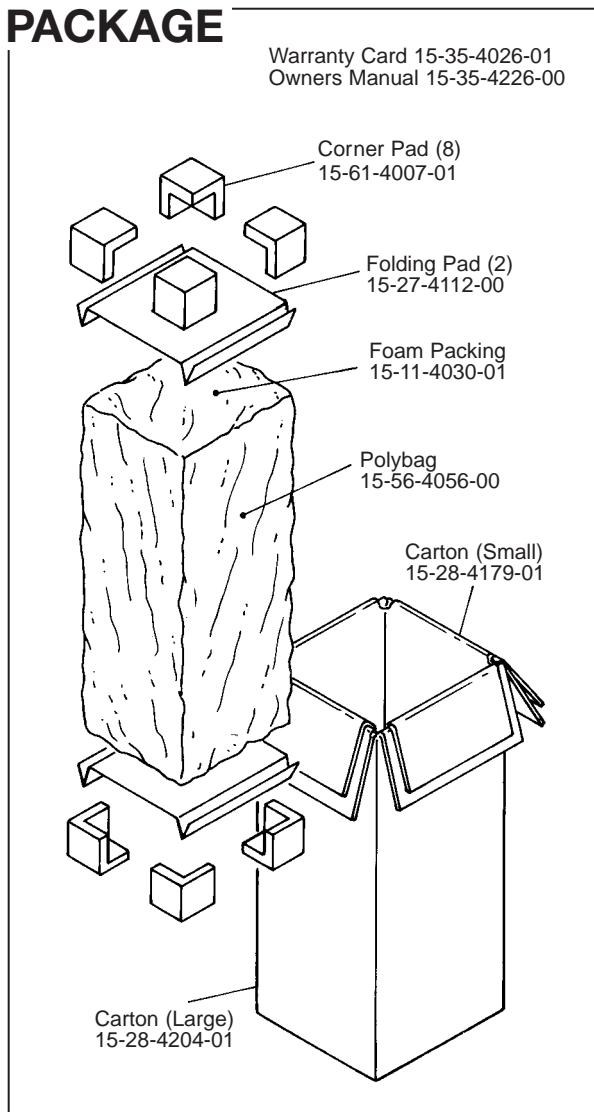
SHIPPING WEIGHT:

53.25 lbs. (24.1 kg.)

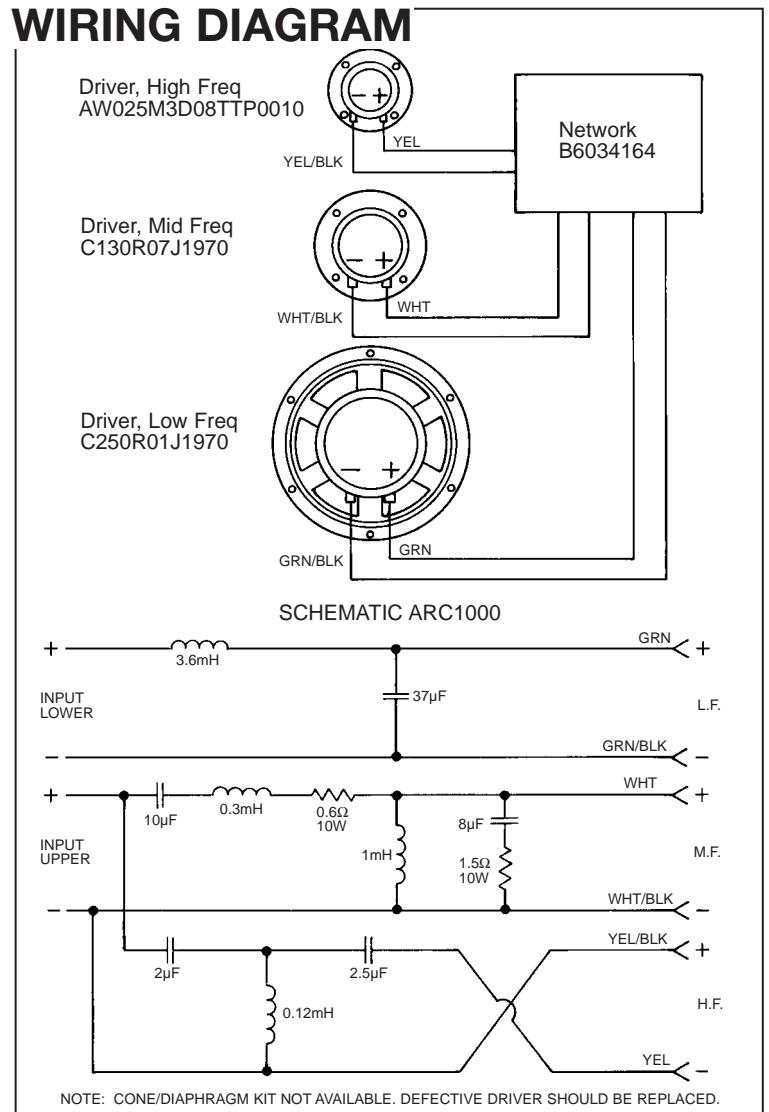
WARRANTY INFORMATION:

- Refer to the Warranty Statement packed with each product.

PACKAGE



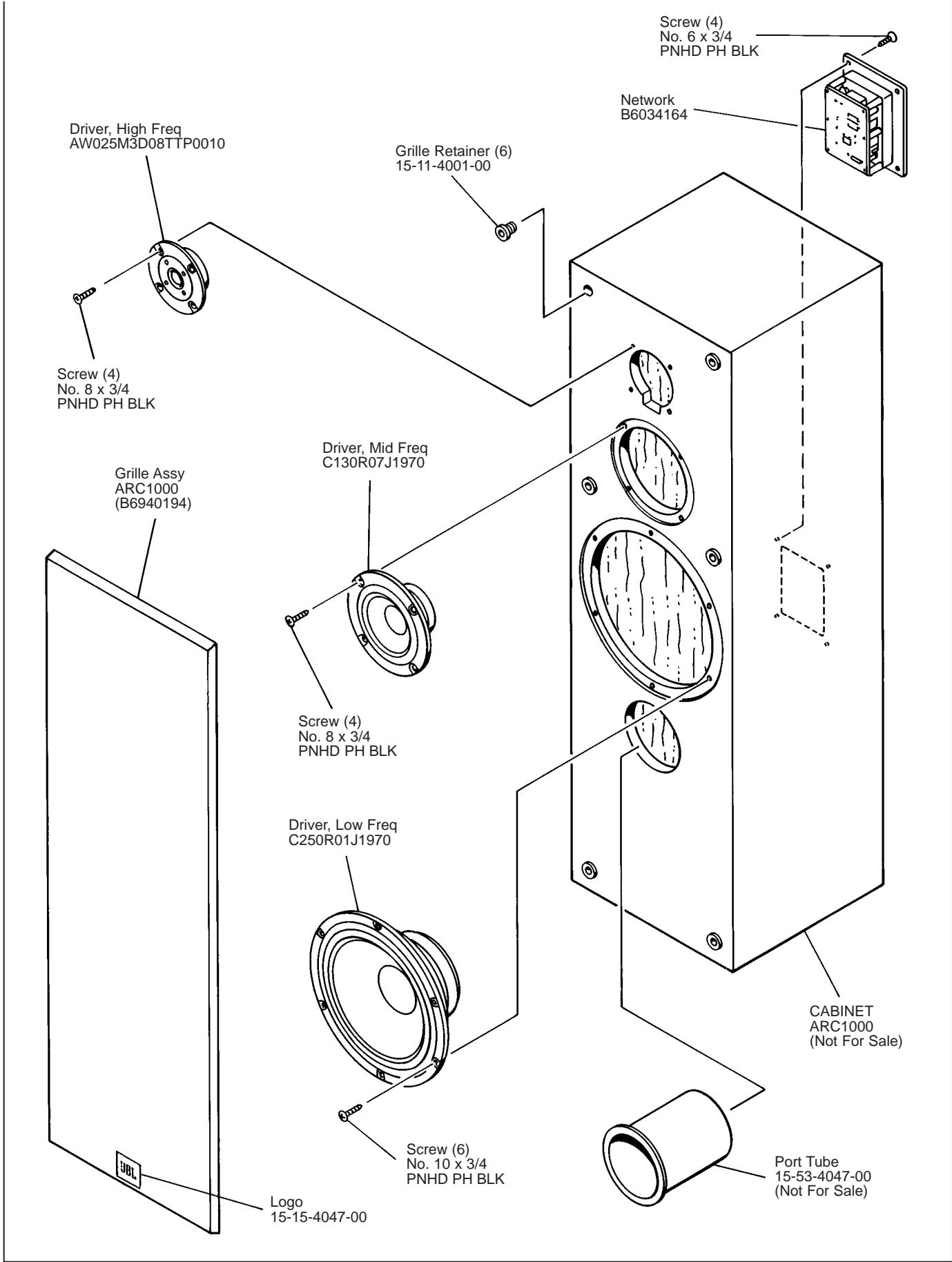
WIRING DIAGRAM



ARC1000

ARC1000

COMPONENT EXPLODED VIEW



ARC1000