

Technical Manual

4312DBK R/L



ACOUSTIC & ELECTRICAL SPECIFICATIONS:

- Nominal Impedance 6Ω
- Max Amp Power 150 watts*
- Frequency Response 50Hz – 40kHz (–6dB)
- Sensitivity 93dB (2.83 volts @ 1 meter)
- Crossover Frequencies 2000Hz, 5000Hz

SYSTEM COMPONENTS:

- Cabinet 4312DBK R/L (not for sale)
- Grille 4312DBK Grille (Blk) 61989
- Low-Frequency Transducer 12" (305mm) 2213Nd 352974-001
 - DC Resistance 4.6 ohms ±10%
- Mid-Frequency Transducer 4" (101mm) 105H 352977-001
 - DC Resistance 4.5 ohms ±10%
- High-Frequency Transducer 1" (25mm) 054Ti 352976-001
 - DC Resistance 3.5 ohms ±10%
- Crossover Network 352980-001

AURAL SWEEP TEST SPECIFICATIONS:

- System Aural Sweep Test 6.0V input 50Hz to 20kHz
- L.F. Aural Sweep Test 5.0V input 50Hz to 2.5kHz
- M.F. Aural Sweep Test 4.0V input 1kHz to 6kHz
- H.F. Aural Sweep Test 2.83V input 4kHz to 20kHz

PHYSICAL SPECIFICATIONS:

- Enclosure Dimensions 23-1/2" x 14-1/4" x 11-3/4" (H x W x D)
- Weight 38 lbs (17.2kg) Each

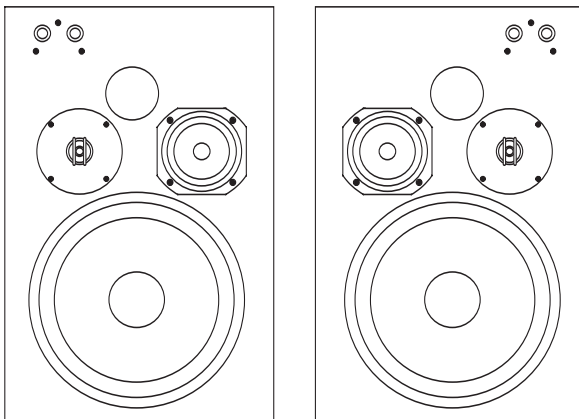
WARRANTY:

- Refer to Warranty Statement packed with each product

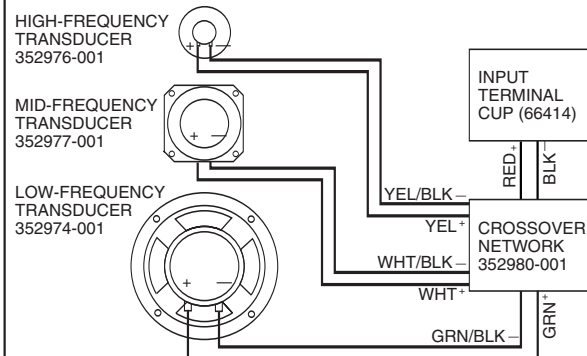
* The maximum recommended amplifier power rating will ensure proper system headroom to allow for occasional peaks. We do not recommend sustained operation at these maximum power levels.

PARTS LIST

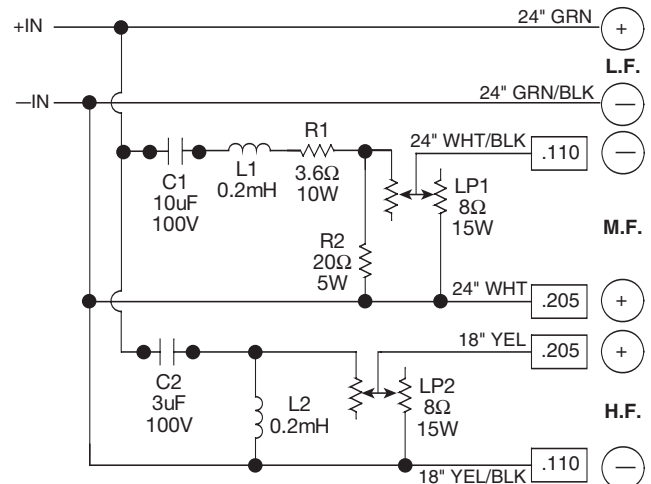
DESCRIPTION	QTY.	PART NO.
Outer Carton	1	352975-001
Top & Bottom End Pad	2	47218-01
Warranty Card	1	331994-001
Tweeter Gasket	1	353025-001
Terminal Cup	1	66414
Port Tube 2.75ID Plastic/Elbow	1	52211
Flower Pot	1	76041
T-Nut	8	61861



WIRING DIAGRAM



4312DBK R/L SCHEMATIC



4312DBK R/L